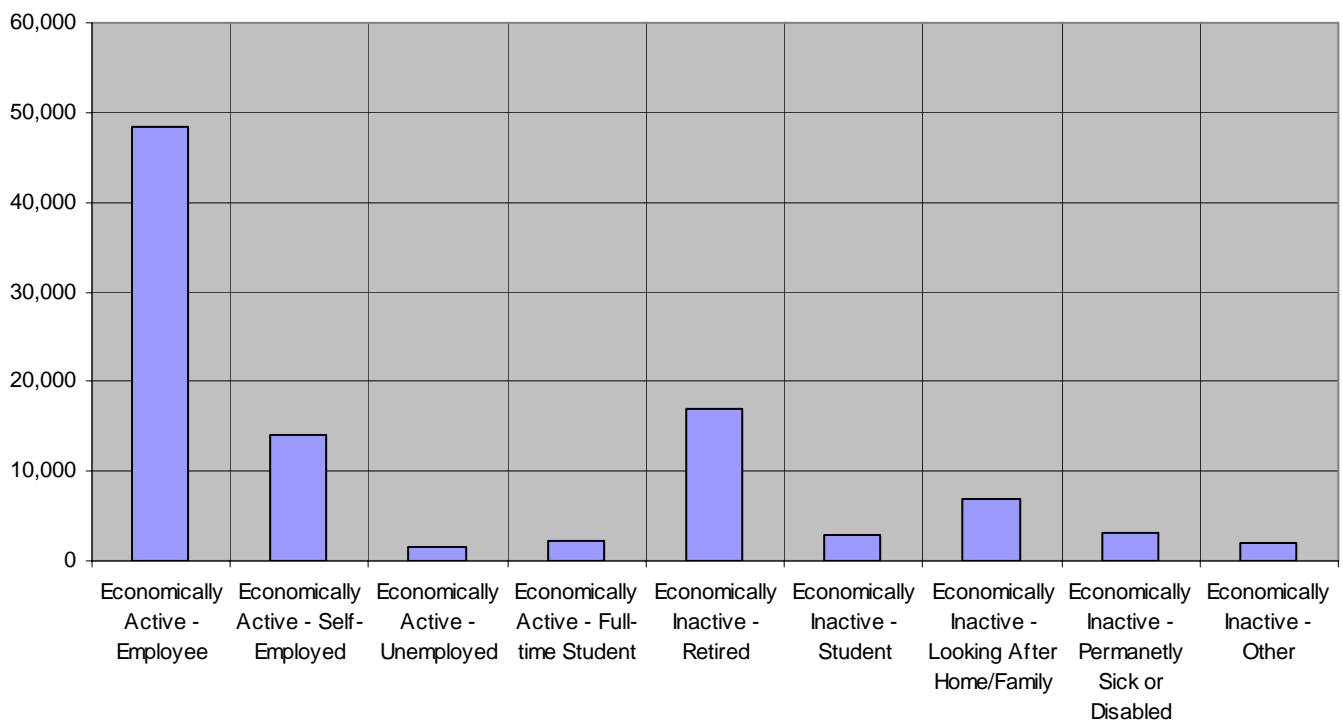


Economic Statistics for Wealden

People Economically Active data from Nomis, Census 2001

Economic Activity	Population
S032:2 (All People : Economically Active - Total)	66,359
S032:3 (All People : Economically Active - Employee)	48,400
S032:4 (All People : Economically Active - Self-employed)	14,008
S032:5 (All People : Economically Active - Unemployed)	1,672
S032:6 (All People : Economically Active - Full-time student)	2,279
S032:7 (All People : Economically Inactive - Total)	31,716
S032:8 (All People : Economically Inactive - Retired)	16,874
S032:9 (All People : Economically Inactive - Student)	2,805
S032:10 (All People : Economically Inactive - Looking after home/family)	6,977
S032:11 (All People : Economically Inactive - Permanently sick or disabled)	3,082
S032:12 (All People : Economically Inactive - Other)	1,978



Gender and economic activity, data from Annual population Survey Nomis.

	Wealden (numbers)	Wealden (%)	South East (%)	Great Britain (%)
All people				
Economically active [†]	70,100	78.3	82.3	78.3
In employment [†]	68,400	76.1	79.0	74.3
Employees [†]	54,700	62.1	68.2	64.6
Self employed [†]	12,800	13.6	10.5	9.2
Unemployed [§]	1,800	2.5	3.9	5.0
Males				
Economically active [†]	38,800	86.1	87.1	83.1
In employment [†]	37,900	83.9	83.7	78.5
Employees [†]	28,900	65.5	68.6	64.9
Self employed [†]	8,400	18.4	14.8	13.2
Unemployed [§]	900	2.4	3.9	5.5
Females				
Economically active [†]	31,300	70.0	77.1	73.2
In employment [†]	30,500	68.0	74.0	69.8
Employees [†]	25,800	58.6	67.7	64.4
Self employed [†]	4,400	8.6	6.0	5.0
Unemployed [§]	!	!	3.9	4.4

! Estimate is not available since sample size is disclosive

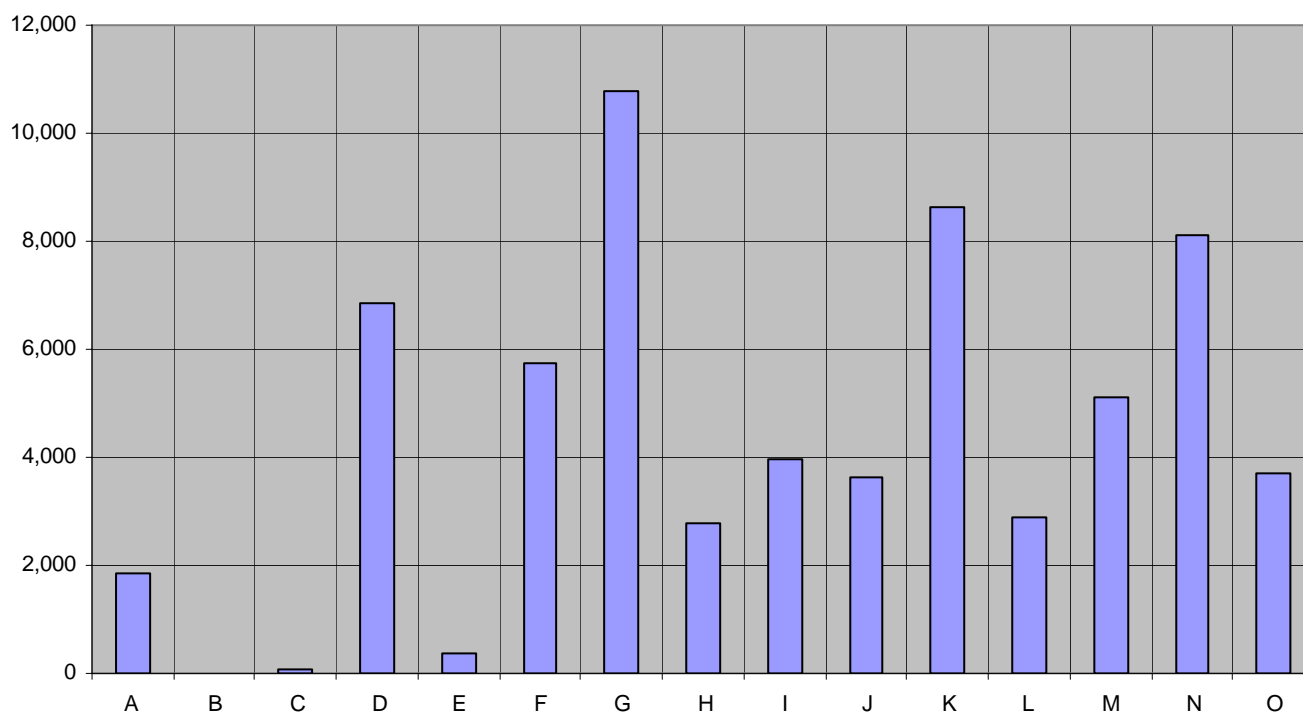
†numbers are for those aged 16 and over, % are for those of working age (16-59/64)

§numbers and % are for those aged 16 and over. % is a proportion of economically active

People working by Industry, data from Nomis, Census 2001

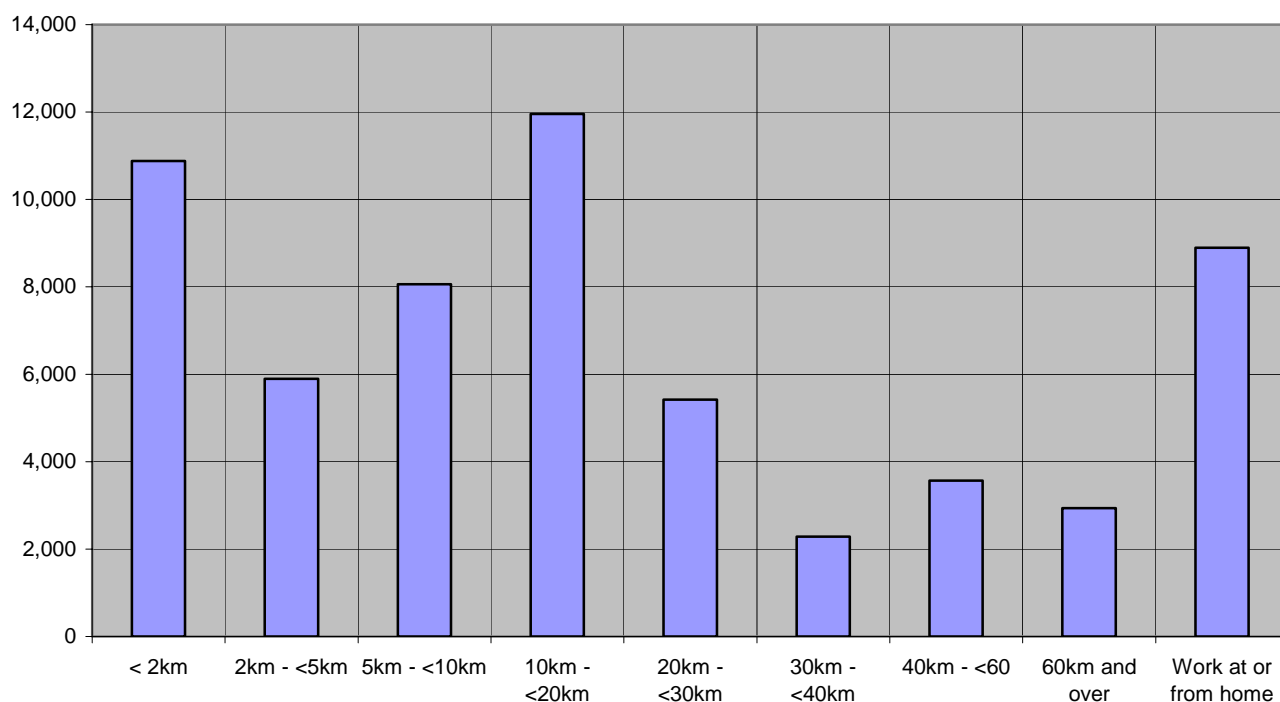
Industry	Wealden
S036:13 (All People - A. Agriculture, Hunting, Forestry : All People)	1,857
S036:25 (All People - B. Fishing : All People)	8
S036:37 (All People - C. Mining & Quarrying : All People)	73
S036:49 (All People - D. Manufacture : All People)	6,870
S036:61 (All People - E. Electricity, Gas and Water Supply : All People)	356
S036:73 (All People - F. Construction : All People)	5,729
S036:85 (All People - G. Wholesale and Retail trade, Repair of Motor Vehicle : All People)	10,791
S036:97 (All People - H. Hotels and Restaurants : All People)	2,769
S036:109 (All People - I. Transport, Storage and Communication : All People)	3,967
S036:121 (All People - J. Financial Intermediation : All People)	3,614
S036:133 (All People - K. Real Estate, Renting and Business Activities : All People)	8,643
S036:145 (All People - L. Public Administration & Defence, Social Security : All People)	2,897
S036:157 (All People - M. Education : All People)	5,111
S036:169 (All People - N. Health and Social Work : All People)	8,114
S036:181 (All People - O, P, Q. Other : All People)	3,704

*Graph showing people working by industry, Census 2001
(See above table for industry key)*



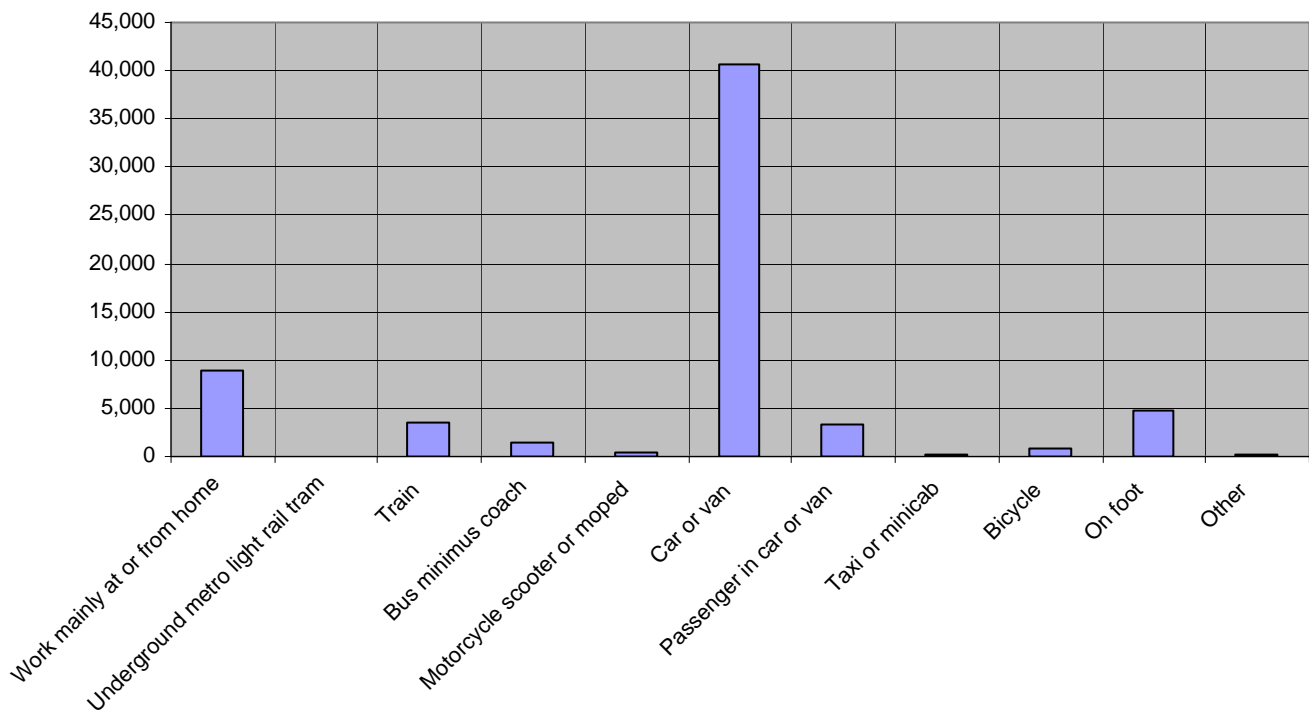
Distance Travelled to Work, data from Nomis, Census 2001

Distance Travelled	Number of People
S120:2 (ALL PEOPLE : Less than 2km)	10,882
S120:3 (ALL PEOPLE : 2km to less than 5km)	5,896
S120:4 (ALL PEOPLE : 5km to less than 10km)	8,062
S120:5 (ALL PEOPLE : 10km to less than 20km)	11,959
S120:6 (ALL PEOPLE : 20km to less than 30km)	5,420
S120:7 (ALL PEOPLE : 30km to less than 40km)	2,283
S120:8 (ALL PEOPLE : 40km to less than 60km)	3,568
S120:9 (ALL PEOPLE : 60km and over)	2,940
S120:10 (ALL PEOPLE : Working at or from home)	8,893



Method Travelled to work

Method	Number of People
S119:2 (ALL PEOPLE : Work mainly at or from home)	8,893
S119:3 (ALL PEOPLE : Underground, metro, light rail, tram)	84
S119:4 (ALL PEOPLE : Train)	3,561
S119:5 (ALL PEOPLE : Bus, minibus, coach)	1,500
S119:6 (ALL PEOPLE : Motor cycle, scooter or moped)	500
S119:7 (ALL PEOPLE : Driving a car or van)	40,569
S119:8 (ALL PEOPLE : Passenger in a car or van)	3,380
S119:9 (ALL PEOPLE : Taxi or minicab)	192
S119:10 (ALL PEOPLE : Bicycle)	728
S119:11 (ALL PEOPLE : On foot)	4,810
S119:12 (ALL PEOPLE : Other)	309



Earnings

Data from Audit Commission Area Profile

<http://www.areaprofiles.audit-commission.gov.uk/>

Indicator	Chosen Area	Area Data Covers	Value
Gross weekly pay: all workers living in the area	Wealden	Wealden District Council	£358.2
Gross weekly pay: male workers living in the area	Wealden	Wealden District Council	£454.8
Gross weekly pay: female workers living in the area	Wealden	Wealden District Council	£256.5
Gross weekly pay: all workers working in the area	Wealden	Wealden District Council	£306.7
Gross weekly pay: male workers working in the area	Wealden	Wealden District Council	£345.3
Gross weekly pay: female workers working in the area	Wealden	Wealden District Council	£203.6

Skills

Data from Audit Commission Area Profile

<http://www.areaprofiles.audit-commission.gov.uk/>

Indicator	Chosen Area	Area Data Covers	Value
% of the population whose highest qualification is a first degree (or equivalent)	Wealden	Wealden District Council	19.7%
% of the population whose highest qualification is 2 A' levels (or equivalent)	Wealden	Wealden District Council	8.7%
% of the population whose highest qualification is 5 GCSE's Grade A*-C (or equivalent)	Wealden	Wealden District Council	23.1%
% of the population with no or low qualifications	Wealden	Wealden District Council	41.3%
% of the population holding other qualifications	Wealden	Wealden District Council	7.3%

Profile of businesses

Data from Audit Commission Area Profile

<http://www.areaprofiles.audit-commission.gov.uk/>

Indicator	Chosen Area	Area Data Covers	Value	
Total number of VAT registered businesses in the area at the end of the year	Wealden	Wealden District Council	6565	More
% change in the number of VAT registered businesses	Wealden	Wealden District Council	-0.6%	More
Local estimates of CO2 emissions (tonnes CO2) - Domestic emissions per capita	Wealden	Wealden District Council	3.4tonnes	More
Local estimates of CO2 emissions (tonnes CO2) - Total emissions per capita	Wealden	Wealden District Council	8.0tonnes	More